

# SFP-Modules

## Features

- simple installation and removal
- uni- or bidirectional transmission
- Range of up to 80 km for singlemode and up to 2 km for multimode

## Technical Data

|                             |  |
|-----------------------------|--|
| Fibre type                  | Singlemode (9/125 $\mu\text{m}$ )   Multimode (50/125 $\mu\text{m}$   62,5/125 $\mu\text{m}$ ) |
| Number of fibres            | simplex   duplex   |
| Connector                   | LC   |
| Operating temperature range | -40 ... +85°C  |

## SFP Module with Bale-Clasp Latch

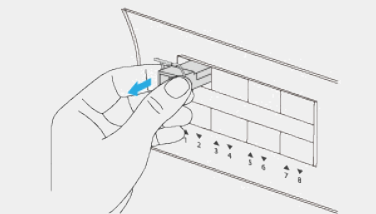
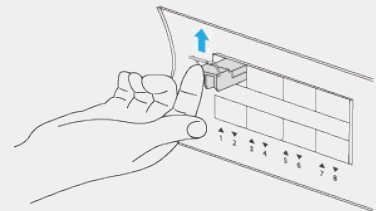


## Important information



- Do not install or remove the modules with the cable connected, as this may damage the cable or the module.
- Protect the SFP modules by inserting clean dust caps after removing the cables.
- Avoid dust and other impurities getting into the optical ports of the SFP modules, as this can significantly affect the optical transmission.

## Removal of an SFP Module



## Notes on Removal



- SFP modules are sensitive to static charge. Therefore, use an ESD wrist strap or a comparable personal earthing device.
- Disconnect all cables before removing or installing an SFP module.
- Flip the bale lock over to unlock the module.
- If the bale lock is blocked and you cannot open it with your index finger, use a small flat-blade screwdriver or another long, narrow instrument to open the bale lock.
- Hold the SFP module between your thumb and index finger and carefully pull it out of the device connection.

## Order Code



Further SFP modules with a range of up to 80 km are available on request!

### Fibre optic connector

**LC** LC-Simplex/-Duplex (socket): depending on the module device version

### Specifications (fibre, range, transmission type, wavelength)

|                     |  |
|---------------------|--|
| <b>SM20-TR-1000</b> | Singlemode 9/125 $\mu\text{m}$   20 km   2 fibres bidirectional   Tx/Rx 1310 nm          |
| <b>SM20-BD1315</b>  | Singlemode 9/125 $\mu\text{m}$   20 km   1 fibre bidirectional   Tx 1310 nm / Rx 1550 nm |
| <b>SM20-BD1513</b>  | Singlemode 9/125 $\mu\text{m}$   20 km   1 fibre bidirectional   Tx 1550 nm / Rx 1310 nm |
| <b>SM40-TR-1000</b> | Singlemode 9/125 $\mu\text{m}$   40 km   2 fibres bidirectional   Tx/Rx 1310 nm          |
| <b>SM40-BD1315</b>  | Singlemode 9/125 $\mu\text{m}$   40 km   1 fibre bidirectional   Tx 1310 nm / Rx 1550 nm |
| <b>SM40-BD1513</b>  | Singlemode 9/125 $\mu\text{m}$   40 km   1 fibre bidirectional   Tx 1550 nm / Rx 1310 nm |
| <b>MM2-TR</b>       | Multimode 50/125 $\mu\text{m}$   2 km   2 fibres bidirectional   Tx/Rx 850 nm            |

SFP - LC - SM20 - TR - 1000